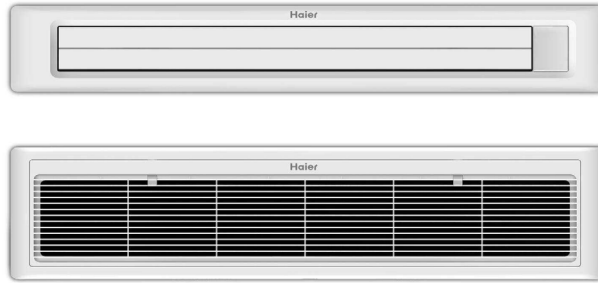


29. Slim duct panel

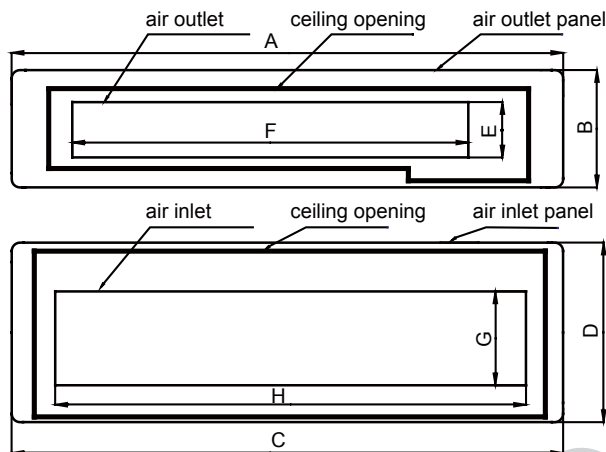


Panel model		P1B-890I/A/D	P1B-1210I/A/D
External dimensions(W/D/H)	mm	890/190/100 (outlet panel)	1210/190/100 (outlet panel)
		890/290.5/32.4 (inlet panel)	1210/290.5/32.4 (inlet panel)
Shipping dimensions(W/D/H)	mm	938/335/220	1258/335/220
Net weight	Kg	4	5
Shipping weight	Kg	5	6
Connectable indoor units		AD052MSERA(D) AD072MSERA(D) AD092MSERA(D) AD122MSERA(D) AD162MSERA(D) AD052MSERA AD072MSERA AD092MSERA AD122MSERA AD162MSERA	AD182MSERA(D) AD242MSERA(D) AD182MSERA AD242MSERA

The air inlet & outlet panel of slim duct Installation instructions

① The hole on the ceiling (Separation type panel):

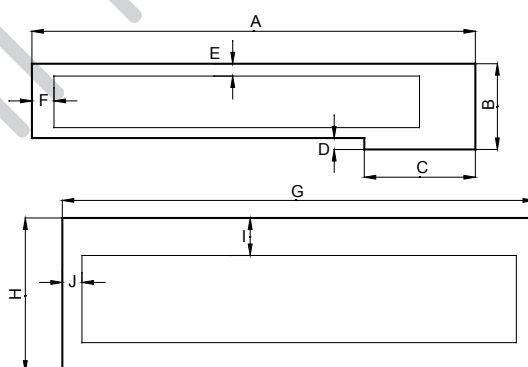
The dimension of air outlet and inlet panel: (facing the panels)



Model	A	B	C	D	E	F	G	H
AD052MSERA AD052MSERA(D) AD072MSERA AD072MSERA(D) AD092MSERA AD092MSERA(D) AD122MSERA AD122MSERA(D)	890	190	890	291	90	640	152	760
AD162MSERA AD162MSERA (D) AD182MSERA AD182MSERA(D) AD242MSERA AD242MSERA(D)	1210	190	1210	291	90	960	152	1080

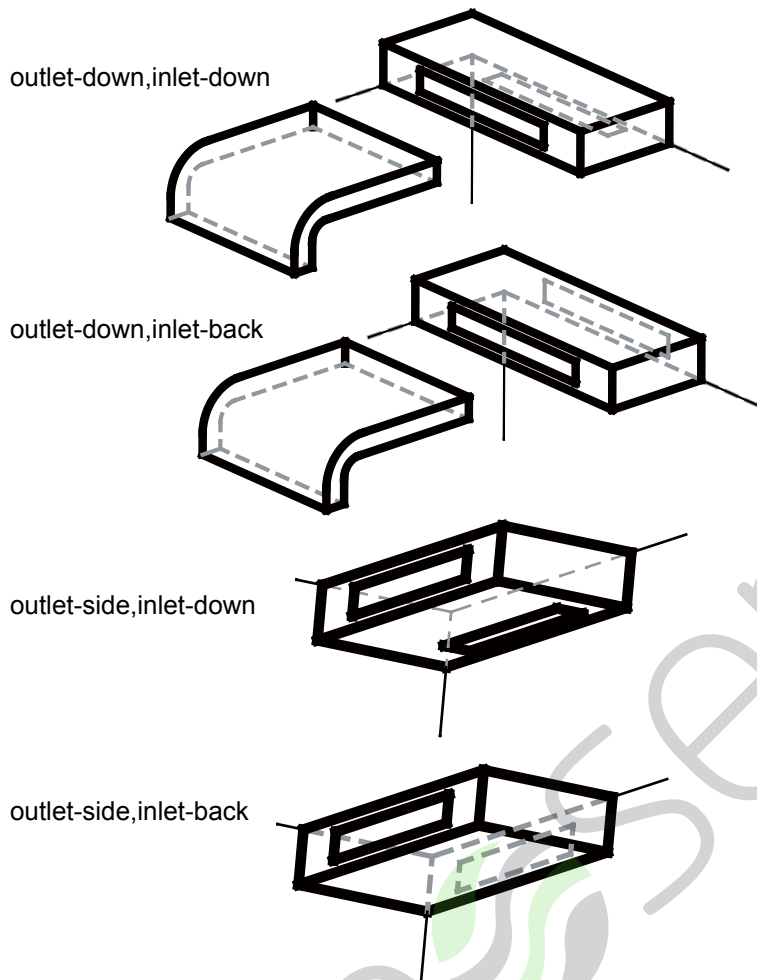
② The hole dimension on ceiling:

Regarding the air outlet hole: facing the air outlet of indoor unit, open the hole on the side of ceiling basing on this air outlet, the hole size should be 40mm far away from left side of panel, 21mm far away from stop side of panel.
Regarding the air inlet hole: basing on air inlet of indoor unit, the hole size should be 31mm far away from left side of panel, 60mm far away top side of panle.



Model	A	B	C	D	E	F	G	H	I	J
AD052MSERA AD052MSERA(D) AD072MSERA AD072MSERA(D) AD092MSERA AD092MSERA(D) AD122MSERA AD122MSERA(D)	776	150	194	20	21	40	820	260	60	31
AD162MSERA AD162MSERA (D) AD182MSERA AD182MSERA(D) AD242MSERA AD242MSERA(D)	1096	150	194	20	21	40	1140	260	60	31

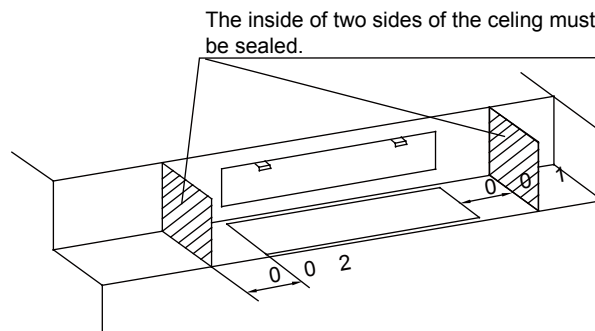
③ Usually there are four types of inlet and outlet :



Attention:

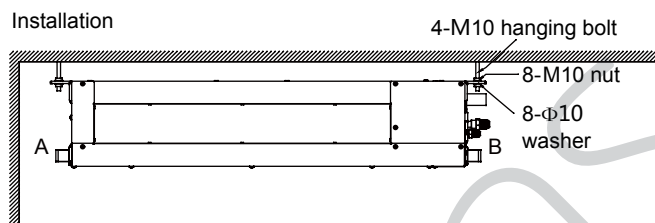
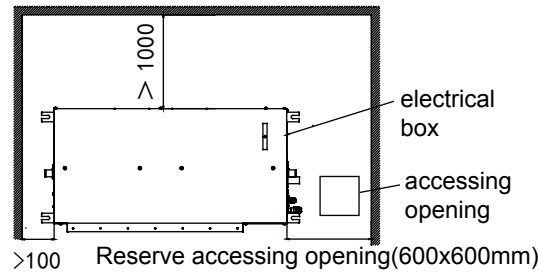
- When inlet-down, the minimum distance between the air outlet and the air inlet is 800mm.
- When outlet-side, don't make the air outlet and the inlet in the same level.
- Between the air outlet, air inlet and unit must be sealed by air duct.

④ Set the blocking in the ceiling to protect the indoor unit.



⑤ Reserve service hole

The installation space requirements:



Please use the level meter, make sure the unit level be within 5mm; If drainage from A, ensure that B is slightly higher than A, in order to facilitate drainage; If drainage from B, ensure that A is slightly higher than B.

⑥ The Installation of the air inlet&oulet panel can be divided into the following two types: with out air duct and with air duct.

A. Without air duct

Fix the air outlet panel with M4*9 Screw, fix the inlet panel on the machine or the frame with M4*16 Screw. If the panel is not directly connected with the unit, the middle connecting part and machine and panel must be sealed.

B. With air duct

The air duct is connected with the air outlet of the indoor machine by rivets. Connect the air duct with the outlet of the unit with rivets, and connect the other side of the air duct with the air outlet panel. the air duct must be Insulated.

⑦ Electrical parts connection of super slim (MRV series)

There are 2 UP/DOWN swing motors and 1 LEFT/RIGHT swing motor in the breeze grid pannel. The UP/DOWN swing motor is the one with a blue connector, the LEFT/RIGHT swing motor is the one with a white connector.

Connect the UP/DOWN swing motors to indoor unit PCB port CN1 and CN11-1, and connect the LEFT/RIGHT swing motor to indoor unit PCB port CN35.

- Both CN11 and CN11-1 can connect with any UP/DOWN swing motors.
- If the Infrared remote receiver is needed, please connect the Infrared remote receiver to indoor unit PCB port CN31 and remove the short connection wire on CN36.

